



*Flomaton
Antique
Auction*

Since 1967

September

28 & 29

Friday - 5:00 PM

Saturday - 10:00 AM



389 C. 1870 Renaissance Sofa



355 Early 1800 Carved Federal

371 Period Empire, Virginia



374a 19th Century Lighting



382 Brilliant Cut Glass

Preview – Week of Auction
Mon. – Fri. – 8:00 – 5:00

- Absentee and Telephone Bidding -

Needs to be confirmed by Thursday prior to Auction

Friday, Sept. 28 - 5:00 pm

Pages 3-9

Saturday, Sept. 29 - 10:00 am

Pages 10-19



#352-- Unusual reeding



#333--Period Chippendale Cherry

Refreshments by
Atmore Christian School

We accept Visa/MC
for purchases

Accommodations
Days Inn – Brewton & Atmore
1-800-DAYSINN
Brewton Motor Inn
334-867-5741
Atmore Best Western
334-368-8182
Lake Stone (motorhomes)
850-256-3059

There are many fine items included in this large 2 day auction from various estates and collections in the south (Mobile, Opp, AL, and Pensacola Beach, FL, and Houston, TX) and from Pennsylvania and New England areas. You will find many fine pieces from several important periods in American History – 1770's to early 1900's. Chippendale, Hepplewhite, Sheraton, Empire, Rococo, Renaissance, Aesthetic and Colonial Revival periods are well represented in items for all rooms of a house. There are many secretary desks, side boards, 3 rare "ham" serving tables, selections of 1 and 2 drawer stands, candlestands, many fine chests (N.E., Phila., N. Y.), sofas/chairs, tables (parlor, card, banquet – 2 part, rare 1854 accordion), beds, dressers (2 suites) crafted in cherry, mahogany, walnut, rosewood, tiger maple, and several finely inlaid items. There are approximately a dozen hard-to-find Southern items. Accessory items include – exceptional brilliant cut glass, Victorian lighting (girandoles, GWW lamps, lustres), Old Paris, carnival glass, sterling, and gold pocket watches. Please peruse this catalog and explore our web site at:

www.flomatonantiqueauction.com

More photos and many close-ups of items.

Selling Friday - lots under #300

Selling Saturday - lot #300 & up



#84--Unique Period Sheraton

* Please note changes to catalog layout. This is still changing as we work toward an optimum format. Greater effort has been made to put the photos on the same page as the description. More photos than ever before are included, though sometimes at the cost of size. Larger photos and feature details are available on our website: www.flomatonantiqueauction.com.

* Many fine items are included in both Friday & Saturday sessions. Plan to come both days for a large Auction of fine period Antiques.



#326 Walnut, dishtop



#350

251- 296-3059

P.O. Box 1017 / 320 Palafox St.
Flomaton, Alabama 36441

Auctioneers- Herbert Heller, License 464
Nevin Heller, License 1094

FRIDAY SALE ITEMS

1. c. 19th century oval storage box, iron rivets, 13" long, 4" tall.
2. Finely cast bronze flagpole eagle, 6" tall, open wings.
3. Set 8 contemporary graduated covered boxes, cherry, made in manner of Shaker, tapered fingers with copper rivets.
4. Lot 5 duck decoys, original paint; A). Pr. 18" long, B). 11" long, C). 14" long, D). 14" long. Illus.pg9 with similar items.
5. Victorian solid cherry spool cabinet, bird's eye maple panel brass pulls, 4 drawers double drawers, canted corners, turned feet (make nice end table), 30" wide, 27" tall. Illustrated below.
6. 19th Century lift top mahogany dresser box satinwood line inlays, inset leather top with brass lion and ring pull, brass tacks, front drops down to reveal 2 over single drawer, with pine secondary woods, brass feet, 11" wide, 8" tall, 8" deep. Illustrated above.
7. Renaissance candlestand / pedestal, solid walnut, 8" tall carved deer in center of base, turned incised carving, paw feet, 35" tall, 12" dia. Illustrated right.
8. C. Early 1800 Southern yellow pine candlestand, 20" diameter top nicely turned pedestal, sabre legs. Illustrated right.
9. 2 Blue and white Agateware pails; A) 7" diameter with lid, wire handle, B) 8" diameter, wire handle. Illustrated with item 117 on page 8.
10. C Early 1800 candlestand, Allen Co., KY, solid cherry, 16" dia., nicely turned pedestal, arched sabre legs.
11. 19th Century kerosene lamp, 11" tall, possibly Sandwich Glass Co.
12. Early 1800 Happlewhite pembroke dropleaf table, solid walnut, square tapered legs, drawer in skirt, 34" long.
13. Early copper bed warming pan, engraved floral design on lid, wooden turned handle, 40" long. Illustrated page 12.
14. Early 1800 Sheraton, Lancaster Co., PA, lift top blanket chest, 2 drawers in base, dovetailed construction, nice moldings, art grained finish, iron strap hinges, till with secret drawer, 46" wide, 28" tall. Illustrated.
15. Period Empire washstand, solid and flame mahogany, OG scroll drawer over gothic arched paneled door, splash back, slanted galley sides, 35" tall, 33" wide. Illustrated.
16. Early 1800 KY area candlestand, fruitwood, 14" square top, urn turned pedestal, nicely shaped cabriole legs, repairs to base. Illustrated above right.
17. C. Mid 1800 solid cherry writing table, skirt drawer, cut out lyre ends and stretcher, 18" x 30".
18. Pr. c. 19th century solid brass andirons, 24" tall, nice turnings & octogon spire finials, flared legs, ball feet.
19. C. Early 1800 Sheraton 2 part wall mirror, cherry and flame mahogany, turned and spiral half columns, brass rosettes on corner blocks, 18" wide, 37" tall. Illustrated with item 366.
20. Large copper cooking pot, 14" diameter with lid, both have riveted wrought iron handles.
21. C. 1830 Empire sideboard, flame mahogany, 2 drawers over double Gothic arched bowed center doors, full turned columns, tall chimney back, 54" wide, 53" tall. Illustrated.
22. Early 1800's Sheraton, 2 drawer stand, flame mahogany, nicely turned legs, brass cup casters.
23. C. 1830 white marble top center table, solid mahogany, flame mahogany serpentine skirt, lyre ends and stretcher with acanthus carving finials, ripple molding, 36" long 20" wide. Illustrated.
24. Handmade oriental rug, 8' x 12', overall block pattern, garden pattern, ivory field.
25. C. Mid 1800 solid rosewood side chair, scroll and medallion carved crest and knees, cabriole legs, in manner of Mallard, 37" tall.
26. 2 Victorian 8" cast iron wall plaques / stovepipe covers, signed Bradley & Hubbard, deeply cast ladies heads, (A) #1811 Holly leaf head dress, (B) #1810 Lady holding floral, solid brass rings, outstanding original paint. Illustrated above.
27. c. 1880 small extension table, solid chestnut, 36" diameter, octogon pedestal, fluted & finialed sabre legs.
28. Late 19th Century pair of Victorian picture frames, twig carved, solid walnut, gilt liners, with lithographs of children, 1873, 18" wide, 16" tall.
29. C. 1880 French 2 drawer work stand, beautiful banded and matched flame mahogany swivel fold over top, 2 drawers, nicely fitted rosewood and inlaid satinwood interior, turned double pedestals and stretcher, molded sabre legs, 20" wide, 30" tall. Illustrated.
30. Set of four 5" diam. marigold carnival glass pedestal sherberts, holly leaf and berry pattern, ruffled edges.
31. Beautiful c. mid 1800 rococo rosewood sleigh bed, 45" tall headboard, 42" tall footboard, leafy floral carved ends, ripple molded rails, 58" wide inside.
32. 11" Dia. Carnival glass fruit bowl, signed Northwood, grape cluster and cable pattern, ruffled edge, paneled background, 5" tall. Illustrated above.
33. Spinning wheel, turned posts and spindles on 14" wheel, original dark painted surface, 33" tall, 2 diferent size spindles. Illustrated above right.
34. Old Persian runner, 30" x 12', ivory field, red border.
35. C. Early 1800 solid brass andirons, 16" tall, nice brass turning with large finial, nice base with bun feet, black smith made log foot. Illustrated.



#26 Bradley & Hubbard

#32 Northwood & #98

#33



#14 Art Grained



#29 Inlaid Interior



#15 Mahogany Washstand



#21 Empire Period Gothic Arches



#23



#5

#458



#39



#35 & #57



#53



#47 Rare Small Size

- 36. C. 1800 softwood rope bed, full size, 62" tall headboard, turned post and footboard blanket rail, triple paneled headboard. Illus. below.
- 37. Brass and iron footman, 14" tall, reticulated, anthemion leaf pattern, wooden handle, signed Glomar Artworks, NY.
- 38. Early 19th Century New England open base washstand, white pine, dovetailed galley back, skirt drawer, square tapered legs, shelf in base, 29" wide, 34" tall. Illus.
- 39. Early 19th Century cabinet, 3 drawers over double paneled doors, old blue paint over old yellow paint, galley back and side, tall bracket feet with cut out skirt, 39" tall, 40" wide. Illustrated.
- 40. C. Early 1800 Sheraton 1 drawer stand, Allen County, KY., solid cherry, excellent turned legs, 25" square. Illustrated.
- 41. C. Early 1800 Hepplewhite 1 drawer stand, Western VA, solid walnut, square tapered legs, molded edge on drawer, 24" square, overhang top.
- 43. Lot 4 blue and white stoneware 15" rolling pins, blue and white decorations, turned handles; A). blue spiral stripe, B). floral advertising decorations, Ben M. Jacobs & Bros. Furn., Birmingham, AL., C). floral pattern, D). blue stripe. Illustrated --->.

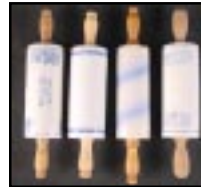


#52 Inlaid Satinwood, Rosewood



#59 Original

- 44. Early 1800 Tenn. stepback cupboard, old brown over blue/green paint, double glass doors over double paneled doors in base, cut out skirt, 6' tall, 32" wide.
- 45. Rare 19th Century tin kitchen dispensary (security safe), original rose and floral decorations, various compartments for flour, coffee (w/ coffee grinder), tea, spices, sugar, meal, and bread, excellent original condition with exception of 1 (replaced) bread compartment cover, 40" tall, 32" wide. Illustrated opposite page.
- 46. Victorian Gone With The Wind lamp, 21" tall, ball shade and base, orange lillies, leaf and fern decorations, repousse cast brass fittings, fancy reticulated base, lift out tank, electrofied. Illust.
- 47. Unusual small size C. 1870 Renaissance server, solid walnut, white marble top, 2 drawer over double door base, fruit carved pulls, grape cluster crest with reticulated shelf supports, 73" tall, 41" wide. Illustrated.
- 48. 1880 round parlor or game table, solid and burl walnut panels, 30" diameter, 2 skirt drawers, shelf in base, turned legs, incised carvings. Illustrated.
- 49. Victorian 4 drawer chest, 2 half drawers, beautifully figured walnut, carved shell and leaf pulls, 42" wide, 44" tall.
- 50. Large oval Victorian shadowbox frame, nice molded edges, gilt liner, 32" tall, 28" wide.
- 51. C. 1870 bowfront 3 shelf etagere, serpentine front cabinet base, bowed ends, molded and open cut out shelf supports and galley backs, 72" tall, 41" wide
- 52. C. 1870 20" diameter parlor table, walnut, with tiger maple and rosewood inlaid checker board top, solid rosewood, turned pedestal, turned wooden tray in center, 4 scrolled legs, incised carving with small medallion decorations. Illustrated.
- 53. C. 1870 Renaissance writing table, solid walnut, leather with burl banded edge, bowed ends, reticulated and molded ends, stretcher and finial, incised carving on scroll legs and skirt, excellent condition, 21" deep, 36" wide. Illustrated.



#43



#38



#48

- 54. Fine Renaissance period secretary abatant, possibly G Henkels, Phila., solid walnut, boldly carved floral & scrolled panels, carved borders, drop front desk with fitted interior, bird's eye maple interior, 2 drawers over double doors, carved canted corners. 36" wide, 51" tall.
- 55. Unusual porcelain wall clock, 16" tall, pansy decorations, cast fittings, lions heads, grape clusters, Bacchus on crest. Illustrated with 444 on page 18.
- 56. Solid mahogany Adams style baby grand piano, 5' 2" long, Beckwith, Chicago, square tapered legs with nice floral carved panels.
- 57. Early 1800 carved Federal drop leaf table, solid cherry, carved acanthus leaf and turned legs, single board construction, 25" wide, 38" long Illustrated this page with item 35.
- 58. Fine C. Early 1800 carved Federal drop leaf workstand, mahogany, 2 drawers over bag drawer, 2 false drawers on reverse side, turned and wishbone pedestal, acanthus carved leaves on sabre legs, brass repousse medallions, feet, and casters. Illustrated on opposite page.
- 59. C. Mid 1800's astro lamp, marble base, brass font and column, with original fire gilt, prisms, old etched and cut tulip shade, 18" tall, electrified. Illust.
- 60. C. Early 1800 Hepplewhite chest, solid walnut, 4 graduated drawers, inlaid banding above bracket feet, small period brass oval pulls, 42" wide, 38" tall. Illustrated opposite page.
- 61. C. Early 1800 carved Federal sofa, mahogany, acanthus carved scroll arms and skirt, carved paw feet with cornicopia, roll back with acanthus leaf and rosette scroll ends, 91" long. Illustrated opposite page.



#46



#40 Allen County KY



#36, 113, 476

- 62. c. 19th century ironstone teapot, nicely shaped and fluted sides, grape cluster motif on handle, finial and spout, copper lustre trim, 11" tall
- 63. C. Early 1800's Empire dressing table, acanthus & pineapple carved mirror arms, shaped beveled mirror with carved rope and shell border, 3 half drawers, 2 over single drawer, unusual square pedestal with platform base, paw feet, 2 OG drawers, solid brass pulls, 7' tall, 42" wide. Illustrated.
- 64. c. early 1800 pianoforte, Ernst Rosenkraud, Dresden, solid & flame mahogany, caperthium elm & ebony inlaid panels, double turned pedestals, sabre legs, brass paw feet, original ebonized & golden stenciled lyre pedal support, 5' 9" long, 30" deep Illustrated below.
- 65. Mid 1800 Rococo rosewood half commode, white marble top, serpentine front, 1 drawer over door, turned and fluted half columns on canted corners, rose carving on drawer, 32" tall, 18" wide. Illustrated.
- 66. Pr. Victorian ruby glass lusters, enamel decoration, ruffle edge, 7" cut tear drop prisms, 14" tall. Illustrated.
- 67. 3 Pc. hard to find Rococo bedroom suite, solid and flame mahogany, full size bed, grape cluster and leafy crest, leafy carving on end of headboard and arched footboard, 52" tall headboard, white marble top dresser 2 over 3 drawers, nice carving on corners and center of drawer, arched swing mirror, maple interior, 6' 6" tall, 43" wide, small marble top washstand, drawer over double doors, 34" wide. Illustrated.
- 68. Large J. S. Germany punch bowl, 14" dia., beautiful hand painted purple and green grape cluster and vine decoration, pale green background, impressed mark. Illustrated.
- 69. Mid 1800's Rococo love seat, solid rosewood, triple carved crest, open scrolls and shell, open arms, carved serpentine skirt, 60" long, 38" tall.
- 70. C. 1870 laminated rosewood chair, possibly G. Henkels, Phila., reticulated scroll and leaf carved, solid laminated back, turned legs, 41" tall. Illustrated.
- 71. Unusual C. Mid 1800 rosewood 4 shelf canterbury, nice turned shelf supports, mirror back, reticulated galley sides on each shelf and on upper half shelf, 4' 10" tall, 22" wide, 15" deep. Illustrated.
- 72. 19th Century Limoge tankard, 12" tall, beautiful hand painted floral decoration, pale green & brown background color, signed Alice Wood. Illustrated.
- 73. Rococo solid rosewood side chair, nice medallion and leafy carved crest, cabriole legs, 40" tall, recently upholstered. Illustrated.
- 74. Unusual Victorian Gone with the Wind lamp, puffy blowout grape cluster and leaf pattern ball shade and base, reticulated fancy castings, 24" tall. Illustrated on page 15 with item 414.



#67 3 Pc. Suite



#63



#45 1901 Kitchen Safe



#66 Victorian Ruby



#73 Rosewood



#70 Lam. Rosewood



#68 Ger. Porcelain



#65 Rosewood



#60 Solid Walnut



#72 Limoge

#58 Period Sheraton



#64 Piano Forte--inlaid, gilt stencils

#61 Acanthus, Cornucopia Carvings

#71 Rosewood, 4'10"





#75 Many Empire Chests



#76 Rare Empire Server



#82a 18th Century



#90 Heart Cutouts



#86 Possibly Needles, Balt.

75. C. 1830 Empire 3 over 4 drawer dresser, 3 half drawers across top, beautiful flame mahogany, scroll columns, in excellent condition, 42" wide, 49" tall Illustrated.

76. Rare Empire period server, flame mahogany, white marble top, OG skirt, drawers, arched panel double doors, 3 pilasters, carved paw feet, excellent restored condition, 48" wide, 38" tall, 22" deep. Illustrated.

77. C. 1830 Empire drop leaf table, solid and flame mahogany, OG ends, heavy turned and square block legs, original brass cup casters, 39" wide, 23" long Illustrated.

79. Mid 1800 2 part secretary/desk, solid and flame mahogany, side pull out drawers, 1 over drawer over 2 drawers in open base with unusual knee hole cutout, tall turned legs, 6' 9" tall, 44" wide. Illustrated.

80. 43 pc. sterling table set, classical Sheraton style pattern, urns & acanthus leaves, pat. 1917, ship's anchor & lion hallmark, service for 8; 8 dinner forks, dinner & butter knives, 9 teaspoons, 6 soup spoons, 2 serving spoons & 2 pc. carving set Illustrated page 15.

81. Period Empire Jackson press, flame mahogany, 3 drawer over double panel doors over large single drawer, full turned classical columns, and arch on center drawer, scroll feet, brass ring pulls, 49" wide, 54" tall. Illustrated.

82. C. 1830 Empire 2 drawer drop leaf stand, flame mahogany, rounded drawer front, wishbone pedestal, scroll feet, 21" wide. Illustrated above.

82A. 18TH Century Chippendale mahogany chest on chest, 2 over 3 drawers, 3 drawer base, canted corners, arched back feet, 5' 11" tall, 42" wide. Illustrated.

83. C. 1820 carved Federal sideboard, flame mahogany, 2 drawers over 4 paneled doors, exceptional carved pineapple and acanthus leaf half columns and paw feet, heavy brass pulls, 66" long, 43" high, 22" deep.

84. C. Early 1800's 4 drawer Sheraton chest, flame mahogany drawer fronts, birch top and sides, 2 sets of graduated double half drawers, full turned columns and feet, original repousse brass escutheons, nicely scroll cut out back, 58" tall, 43" wide, excellent dark original finish and condition. Illustrated on inside cover.

85. Early 19th Century Welsh 2 part linen press, dark quarter sawn oak, mahogany, ebony, and satinwood inlays, 2 over 2 drawers, shaped skirt, bracket feet, 2 double panel doors on top, molded crest, 6' 1" tall, 47" wide, rose head nails. Illustrated.

86. C. 1810 Sheraton drop leaf console table, solid high grade mahogany, possibly Needles, Baltimore, MD, nicely turned and heavy reeded legs, rounded corners, single board top and single drop leaf. Illustrated.

87. C. 1810 small size Sheraton sideboard, solid and flame mahogany, 2 drawers over double paneled drawers, reeded swelled columns, turned legs, splash back with turned spindle galley sides, 48" tall, 44" wide, 22" deep. Illustrated.

88. 9' x 11' 10" Antique persian lavar kirman, very decorative work of art, very finely woven, one of a kind, great antique piece. Illustrated.

89. Early 1800 N. E. Hepplewhite 4 drawer chest, cherry molded edge on drawers, shaped skirt, feet restored, 39" wide, 34" tall. Illustrated.

90. Early 1800 cradle, solid walnut, heart cut out, rare original swing over net holder, 33" long. Illustrated.



#82 Many Stands



#79



#77 Many Empire Tables



#85 Linen Press, Inlays



#81 Empire Jackson Press



#89 Hepplewhite Chest



#87 Rare Size Sheraton

- 91. C. Early 1800 Sheraton cylinder roll top desk, solid cherry, highly figured tiger maple drawer fronts, turned half columns, fitted interior with pull out writing tray, double panel glass double doors, OG crest, 41" wide, 6' 9" tall. Illustrated.
- 92. Antique Persian Mashad rug from Northwest Persia, rich burgandy field with green, ivory, and navy colors, all over floral designs, 9' 7" x 14' 3". Illustrated.
- 93. C. Early 1800 Hepplewhite chest, solid walnut, 4 graduated drawers, inlaid banding above bracket feet, small period brass oval pulls, 42" wide, 38" tall. Illustrated.
- 94. Victorian silverplate covered sugar, open wing bird finial, twig and leaf handles, 6 spoon holders around edge, 9" tall, signed C & R.
- 95. C. Mid 19th Century small 4 drawer chest, beautiful flame mahogany, white marble top, finely cast cornucopia floral bronze escutcheons, molded canted corner, 30" tall, 33" wide, 20" deep. Illustrated.



#100 Northwood

- 96. Small C. 1870 school masters desk, solid walnut, slant lift top, turned galley back, drawer in skirt, carved pulls, turned octagon tapered legs, 30" wide, 40" tall, 24" deep, finished on all 4 sides.
- 97. Late 19th Century pure white marble French mantel clock, signed G. B. & E., Paris, brass movement, porcelain dial, rounded beveled glass bezel, ormolu mounts of ladies head and cherubs, 4 free standing repousse artichoke finials, 14" tall 12" wide.



#112 Early Ang-Indian

- 98. C. Late 1800's plantation type desk, solid chestnut with walnut trim, panels, and door front, 4 drawers on either side of knee hole, slanted writing surface, set back cabinet top with drawers with fitted interior, open center, cut out walnut crest, 5' 9" tall, 50" wide, 27" deep. Illustrated.
- 98A. 5" Carnival glass rose bowl, black amethyst, grape and vine decoration. Illustrated on page 3 with item 32.
- 99. C. 1870 Renaissance secretary, nice molding and burl panels, double glass doors over drop front writing surface with fitted interior, double arched beveled panel doors in base, 7' 2" tall, 35" wide.



#98 Chestnut Plantation Desk



#91 Cherry, Tiger Maple

- 100. 7 Pc. Carnival glass water set, signed Northwood, green singing bird pattern, paneled background, 9" pitcher. Illustrated.
- 101. 8' 2" x 12' 5" Antique persian tabriz, very unusual all over navy background, very intricate and tightly woven, over 400 knots per square inch, made of very fine wool, a great unique and antique piece. Illustrated.



#109 Mahogany



#95 33" Wide

- 102. 6 Pc. Carnival glass berry set, signed Northwood, marigold, 10" berry bowl, 5 small berry bowls, leaf and bud pattern, stippled background. Illustrated.
- 103. C. 1870 Renaissance Victorian hall tree, solid walnut, reticulated carving around mirror and crest, turned hat and umbrella supports, cast iron drip trays, 34" wide, 7' tall.
- 104. 2 Victorian silver on copper matching footed teapots, grape cluster decoration on border, spout, and finials, 12" tall, old Sheffield reproductions.



#105 Acanthus, Carved

- 105. C. Early 1900 Federal Revival canopy bed, mahogany, 7' 5" tall acanthus carved posts, reeded legs, triple paneled flame mahogany headboard, rose carved crest, solid arched footboard, 60" wide overall. Illustrated.
- 106. 2 solid 14 kt yellow gold pocket/pendant watches; A) Am. Waltham Watch Co., engraved movement, Serial # 10656782, gold link chain; B) A. W. Watch Co., Waltham, "Royal" movement, Serial, 115560. Illustrated page 19.
- 107. C. 1800 dressing table, flame mahogany, 1 skirt drawer, acanthus carved and turned legs, half drawers, octagon shaped OG mirror, wishbone arms. Illustrated with item 310 on page 10.

- 108. Solid brass student lamp adjustable height nice finial 7" diameter milk glass shade, 19" tall, electrified.
- 109. C. 1830 Empire secretary/desk, solid and flame mahogany, classical arched individual paned double doors, good flaring cornice, large fold out writing surface, single drawer in base, blocked and turned columns, 6' 8" tall, 44" wide. Illustrated.



#102 Northwood

#115 Anglo-Indian Cabinet

- 110. Interesting alligator leather doctor's house call case complete with many old medicine bottles with contents and original labels.
- 111. C. 1830 Sheraton 4 drawer chest, flame mahogany and cherry, turned half columns and feet, original octagon sandwich glass pulls, dark original finish, 42" wide, 48" tall.
- 112. Rare C. early 1800 Anglo-Indian corner chair, solid teak, spiral turned legs and arm supports under bowed crest and arms, fern and floral carved splats. Illustrated.
- 113. C. Early 1800's full size low post bed, 48" tall nicely turned tiger maple post, matching paneled head and foot boards, with scrolled crest, bolt together rails, 54" wide overall. Illustrated on page 4, with others.

#101 Antique Persian Tabriz 8x12

- 114. Pr. c. 19th century ivory Anglo-Indian candlesticks, inlaid rosewood band, nicely turned, arched base, 7" tall, repaired. Illustrated page 15.
- 115. C. Late 1800's Anglo Indian set back cabinet, solid teak, mortis tenon and pin construction, double original wavy glass arch doors, dental molded cornice, base has 2 over 2 drawers, bracket feet, beveled panels on sides and back, original dark finish, 6' 5" tall, 45" wide, 24" deep. Illustrated.



#92 Antique Persian Mashad





#116 Mahogany #118 Reeded Edges



#117 19th Century Dry Sink



#130 Inlaid Walnut



#131 Finely Inlaid



#120

116. Period Sheraton solid mahogany, open base washstand, single drawer and under shelf, sandwich glass knob. Illustrated.
117. C. 19th century 2 part dry sink, softwood, 4 drawers beside double paneled doors in base, lift top, copper lined, shelf under double glass doors, 6' 10" tall, 54" wide, 23" deep Illustrated.
118. Period Sheraton tilt top candlestand, solid mahogany, shaped top with reeded edge, nicely turned urn, and column pedestal, dovetailed, sabre legs, 24" single board top. Illustrated.
119. C. 1780 period Chippendale drop leaf table, beautiful dense mahogany, one board top, 6 straight molded legs, chamfered insides, 20" drop leaves, 24" wide, 45" long.
120. 3 Blue and white stoneware pitchers, 8" tall, (A) raised cow decoration; (B) raised deer decoration; (C) oval shaped spatterware decoration. Illustrated.
121. Assembled set of 5 country arrowback chairs, bamboo turnings, plank seats
122. 2 buttocks baskets, (A) well made 10" dia. buttocks basket; (B) 10" dia. original blue paint, unusual shape.
123. Mid 19th Century lift top kitchen chest with large till, original art graining, double paneled doors in botto Illustrated.m, 43" wide, 40" tall.
124. 19th Century Vic. cupboard, softwood, setback cupboard, double glass arched doors with unusual floral rosettes, 2 drawer over beveled paneled double doors, shaped apron, bracket feet, 6' 11" tall, 48" wide.
125. Rare C. late 1800's pump pipe organ, by Packard Co., Ft. Wayne, IN., serial # 87600, 23 unusual pipes on upper section, with original paint and decoration, scroll and incised carving, with original bench, sets on 6" platform with double bellows and rare foot pedals to operate pipes, 8' 4" tall, 59" wide. Illustrated.
126. C. Mid 19th Century Rococo rosewood center table, oval insert rose colored marble, medallions on skirt, 4 column pedestal, double scroll legs, turned finial, 34" long. Illustrated.
127. C. 1840 sofa, flaming walnut, scrolled back with open carved leaves and crest, scroll arms and feet, serpentine skirt, 80" long, 40" tall. Illustrated.
128. Renaissance period ladies or youth platform rocker, incised bell flower carving, original gilt.
129. C. late 19th Century double door Anglo Indian solid teak armoire, arched beveled mirrors and paneled doors with vase & floral carving turned feet, unusual dental carved molded cornice, beveled paneled sides, fitted interior with 3 drawers, sliding shelves, beautiful paneled back, mortise tenon construction, 6' 7" tall, 44" wide.
130. 19th Century 8 day wall clock, beautifully inlaid walnut, 17" dia. face, 12" drop with leaf carvings, original blue and gilt eglomise, original colorful paper label. Illustrated.
131. Pr. c. 1870 aesthetic movement chairs, solid walnut, fine ebony and satinwood floral inlays on all flat surfaces, holly leaf & berry open carved triple medallion crest, turned spindles under crest and arms Illustrated.
132. Pr. C. Early 20th Century overlay glass lustres, white cut to cranberry, enamel floral decoration cut tear drop prisms, 10" tall. Illustrated.
133. c. 19th century French baby bed, solid oak, tall turned spindles with center panels, raised panels on rails & 41" tall head and footboards, bolt together, 4' 10" long, 28" wide, 2 1/2" between spindles Illustrated.
134. c. 19th century victorian lolling arm chair, spool turned arms, legs and back, solid walnut, 39" tall
135. Period Empire 2 over 3 drawer chest, beautiful flame & solid walnut, ripple molding, leaf carved pulls, scrolled columns & feet, 42" wide, 43" tall.
136. Blue & white agateware table lamp made from large teapot, basin for shade.
137. C. 1830 late Sheraton sideboard, flame & solid mahogany, 2 rounded drawers over 3 paneled doors, bowed center, turned & reeded columns, classical tapered & ball feet, 12" tall large chimney splash back, 47" tall 5' 6" wide.
138. 2 flow blue bowls; A). 10" diameter, Touraine pattern, Stanley, B). 9" diameter
139. c. 1830 Empire fold over card table, excellent flame mahogany, wishbone pedestal, large cove & molded base, bead molding, scroll feet, 36" wide.



#125 Pipe Organ 8 1/2' Tall



#122 Old Baskets



#126 Rosewood

#133



#127



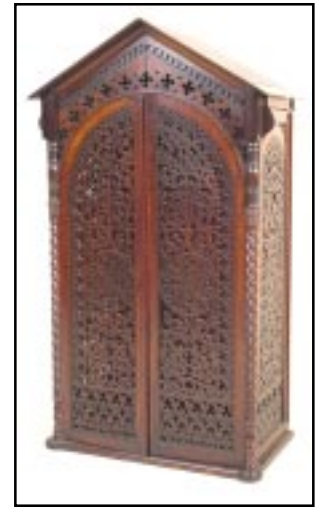
#132 Ruby Cut Glass



140. c. early 1800 lap desk, slant lid, double lift top, one under writing surface, one exposing pr. ink wells and storage, inlaid escutcheons.
141. C. 1830 Empire, mahogany, console table, OG skirt, square pedestal, unusual platform base with flaring feet, single board mahogany top, 39" wide, 22" deep, 29" tall.
142. Rococo mahogany fold over card table, leafy carving on serpentine front, sides and cabriole legs, rope carved edges. Illustrated.
143. Empire period mahogany hat rack, square center post with 8 flaring arms with pegs for hats, coats, and umbrellas, copper drip tray, 6' 7" tall, 32" wide. Illustrated.
144. Early 19th Century 2 drawer solid walnut stand, nicely turned legs, 19" wide.
145. Excellent carved rosewood c. mid 1800 Gothic 2 door cabinet, rope twist corner columns, reticulated cut out on doors & sides, 24" wide, 46" tall, 14" deep. Illustrated.
146. Large c. 19th century gold mirror, 34" x 54", provenance - Old Albert Hotel, Selma, AL.
147. Rococo 4 drawer white marble top dresser, serpentine front, beautiful flame & solid walnut, oval mirror, reticulated leafy carved crest, mirror arms & eschtheons, canted turret corners, 42" wide, 6' 9" tall.
148. Pr. C. Mid 1800 single girandoles, white marble bases, Boston, MA., good castings, vases with acanthus leaves, coffin prisms. Illustrated with item 450.
149. Victorian 4 drawer chest, solid walnut, fruit and leaf carved pulls, 41" wide, 39" tall.
150. 2 chestnut and walnut mantle clocks, C. late 1800's. Illustrated page 18, with item 464.
151. Nice Chippendale Revival knee hole desk or dressing table, gadrooned & leaf carved edge, cabriole legs, nice leaf carved knees, ball * claw feet, beveled side panels, heavy brass pulls, reticulated brass plates, 48" wide, 32" tall, 22" deep.
152. 9 Silverplated match safes, Art Nouveau designs, florals, ladies, one patent 1899
153. Mid. 20th Century mahogany, French style chest, inlaid serpentine front and sides, drop front desk in top drawer, onyx top.
154. Lot of 8 hummel statues; A) Bookworm; B) Star Gazer; C) Mothers Helper; D) Baker; E) Skier; F) Hear Ye, Hear Ye; G) Playmates; H) Little Drummer. Illustrated.
155. Empire period 4 drawer chest, boldly figured flaming & burl walnut front, cherry top and sides, scrolled columns & feet, 43" wide, 44" tall.
156. C. Early 1800 1 drawer softwood stand, PA, nice turned legs, dark original finish condition, 21" square.
157. New England Chippendale 3 drawer chest, solid birch, white pine secondary woods, nicely cutout restored bracket feet, 40" wide, 37" tall. Illustrated.
158. Old Kilim rug, 53" x 9', nice geometric patterns, red and blue colors.
159. Early 1800's softwood cradle, dovetailed, cut out hand holds.
160. Victorian oil on canvas, portrait of lady, gold leaf frame.
161. C. Early 1800 plank seat rocker, original rosewood grained decoration, gold stripes, floral stenciled crest.
162. Oil on canvas, trees by lake, sunset over mountains, 14" x 20".
163. Renaissance period turtle top parlor table, white marble top, serpentine molded skirt and cabriole legs, finial stretcher, 40" long, 29" wide.
164. Hand made oriental rug, Lillihan pattern, 6' 5" x 9' 7", ivory and rose colors.
166. Late 1800's solid rosewood boudoir arm chair, ivory floral inlays.
167. Unusual C. 1870 Renaissance sofa, solid walnut, burl panels, incised and leafy carving, turned legs, 58" long.
169. 1880 Aesthetic movement center table, open cut out carvings, stick and ball turned base, incised carving on legs, 27" square, no top.
171. C. 19th Century English washstand, white marble top with splash back, mahogany, serpentine front and sides, cabriole legs with carved knees, open base, 49" wide, 47" tall.
172. Early 19th Century New England candlestand, birch, 14" diameter screw adjustable top, tripod legs. Illus w/423.
173. Pr. unusual shore bird decoys (flatties), 11" long, wire legs, original paint. Illustrated.
174. C. Late 18th Century Hired man's rope bed, square posts, mushroom turned finials, 43" wide, plank headboard oad and pine, old dry finish.
175. Hard to find pocket watch hutch, chalk, in form of arch with columns, open crest with pocket for watch.
176. 2 Early buttocks baskets, (A) 8" dia. nicely woven; (B) miniature. Illustrated opposite page.
177. Federal Revival 4 post twin bed, 5' 10" tall, acanthus carved posts, paneled headboard, acanthus carved crest.
178. Colonial Revival small oval drop leaf table, solid maple, turned legs, butterfly supports, painted, 24" tall, 22" long.
179. C. 19th Century cannonball country bed, heavy 5" square and turned 54" posts, blanket roll foot and headboard, 59" overall width.
182. Repro. solid tiger maple tavern table, finely figured bird's eye maple top, hand construction, 21" x 28", 24" tall.
183. 19th Century long rifle, Parkers Snow & Co., Meridan, Conn., 1863.
185. Early 1900 Larkin desk, solid oak, drop front writing surface, beveled mirror and shelves on top, 63" tall, 30" wide.
187. Cast iron porcelain bath tub, claw feet, 54" long.
188. Old shipping crate, original paper label, Austin, Young, & Co., fine biscuit, Mass., cushion lid.
189. Victorian Walnut washstand, white marble top with 9" high splashback, drawer over arched panel double doors, 31"W
190. Hand made oriental rug, Heriz pattern, 6' x 9', salmon and ivory colors.
191. 1830 Empire flame mahogany chest, 3 over 3 drawers, full octagon columns, cut out scrolled apron, 44" wide, 44" tall.
192. Small Empire writing desk, solid mahogany, fold out writing surface, galley back and sides, classical C scroll pedestals, 28" wide, 33" tall.
193. Pr. marble pedestals, reeded bands, 33" tall, 10" diameter.
195. Unusual 20th Century bedroom chair, V. C. Bond & Sons, London, patented back folding trouser press, original metal label and sales sticker.
196. Eastlake solid walnut dresser, white marble top, figured walnut panel, carved crest, 41" wide, 6' 10" tall.
197. C. 1890 solid oak rocker, shell, floral, and lions head carved crest, turned spindles under arms and stretcher, original label, Stickley & Brandt Chair Co., N.Y.
198. Arts and crafts slant lid desk, solid oak, line inlays, 38" wide, 45" tall.
199. Handmade oriental rug, Bijar, 7' 1" x 9' 9", green and red colors.



#143



#145 Rosewood



#148 & #450 Archer & Warner Philadelphia



#142 Mahogany



#157 New England Chest, Birch



#154 Hummels



#173 & #4

--Many items not listed or photographed.--

See web site for more photos and supplement list to be added auction week.

SATURDAY SALE ITEMS



#317 Pair, Inlaid Valances



#303 Inlaid Back

- 301. Pr. sandwich glass curtain tiebacks, opalescent , 5" diameter, floral pattern
- 302. 3 Victorian mustache cups, (A) deep cobalt blue, pink colors, gold trim; (B) lavender iris decoration, green background; (C) raised gold floral decorations "Forget Me Not".
- 303. Windsor revival arm chair, solid birch, shaped seat, bamboo turned legs and arms, spindle back with large mahogany crest rail with mother of pearl and satinwood inlaid fans and checker line inlays. Illustrated.
- 304. Mid 19th Century rosewood 8 day bee hive matle clock, Asonia, Conn., with original label, alarm, 19" tall, original eglomise panel.
- 305. C. Early 1800 yellow pine 6 board blanket chest, Delaware Valley, dovetailed till with lid and secret drawers, turned feet, great coffee table size, 50" long, 23" tall, 19" deep. Illustrated.
- 306. Very finely done oil on board, cabin in mountains and sunset, 5" x 7". Illus.
- 307. C. 1800 2 drawer softwood stand, turned legs, 19" wide. Illustrated on page18.
- 308. Small C. 1800 Hepplewhite lift top tea box, mahogany with satinwood line inlay, small brass ball feet, 8" wide, 6" tall. Illustrated on page 16 with another.
- 309. C. early 1800 2 over 3 drawer Sheraton chest, solid cherry, turned half columns and feet, period sandwch glass knobs, 42" wide, 49" tall.
- 310. 19th Century mahogany doll rope bed, Boston, turned 11" tall post with rolling pin head and foot board, 23" long, 12" wide. Illustrated.
- 311. Early stoneware pitcher, 11" tall, nice ovoid shape.
- 312. C. Early 1800 Empire, 2 part gilt mirror, turned half columns on 4 sides with leafy decoration, rosettes on corner blocks, 15" wide, 29" tall.
- 313. 2 open face pocket watches, porcelain dials; A) Elgin movement, serial # 2240352, case pat. 1883 cion silver, Invisible Joint Case Co., brilliant floral engravings; B) Engraved movement, Vanguard, Waltham, Mass., serial # 7021573, 21 jewels. Illustrated on page 19.
- 314. Selection (4) nice blue and white milk pitchers, 8" tall, (A) raised cow decoration; (B) jumping stag decoration; (C) raised fruit decoration; (D) unusual gothic type decoration. Illustrated.
- 315. 2 C. Early 19th Century New England rockers; A) original grain decorations, fruit and leaf stenciled crest, spindle back scroll arms, 44" tall; B) original black stenciled fruit basket crest, shovel seat, 38" tall.
- 316. 3 brilliant cut glass bowls, (A) Hobstars cross hatching, signed Sinclair, (B) Extremely heavy 5/8" thick, 24 pt. hobstar, large fans, cross hatch pattern, (C) 18pt. hobstar with hobstars, cross hatch pattern. Illustrated.
- 317. Pair solid walnut inlaid window valances, arched centers, inlaid leaf and florals with various woods, 7' long. Illustrated top.
- 318. 7 Pc. Victorian green pattern glass lemonade set, poppy pattern, paneled background, exceptional gilt decoration, 14" tall pitcher, 6 glasses. Illustrated.
- 319. 18 kt. solid yellow gold bracelet, round and diamond shaped nuggets on mesh background, touch mark 1837. Illustrated on page 19.
- 320. 19th Century French rococo lingerie chest, solid walnut, drawer over double doors over 3 drawers, great moldings & carved raised panels, shell & leaf carving on quarter columns, heavy scrolled brass pulls and escutcheons, 35" wide, 46" tall.
- 321. Pr. Old Paris vases, scrolled floral and leaf design, original gilt decoration, hand painted florals, excellent condition, 13" tall. Illustrated on back cover..
- 322. Solid walnut 2 over 3 drawer Renaissance Revival chest, nicely paneled and molded drawers, inset turned knobs, unusual full columns on outset corners, incised carving on apron, 48" tall, 36" wide.
- 323. 2 Well done 2" oval cameo brooches, white gold filigree frames, well carved ladies with necklaces each having 3 point diamonds. Illustated left.
- 324. C. Mid 19th Century country French solid pine wash stand, thin insert white marble top with splash back and sides, scalloped skirt drawer, shelf in open base, turned legs and towel bars on either side, 33" wide, 31" tall with 13" tall small mirror, turned posts attached to back.
- 325. Early 1800 New England lift top blanket chest, 2 faux drawers over 2 drawers, white pine, bracket feet, dovetailed construction, 37" wide, 42" tall.
- 326. 18th Century Chippendale dishtop candlestand, solid walnut, 22" dia., great vase and column turned pedestal, excellent shaped cabriole legs and slipper feet, original finish. Illustrated inside front cover.
- 327. Rare stoneware butter tub, blue and white, raised fruit cluster decorations, original wire handle, 4" tall, 7" diameter. Illustrated above left.
- 328. Pair of Hepplewhite style knife boxes, mahogany, slant lift tops, slotted interior for tableware service of 12, mid 1900's, reverse block fronts, brass oval pulls and handles, bracket feet.
- 329. Very unusual antique persian Tabriz rug, from the turn of the century, warm soft colors all over design, beautiful central medallion, 11' 5" x 13' 10".
- 330. Early NC blanket chest heavy solid walnut, large dovetailed corners, molded edges, strap hinges, rosehead nails, bracket feet, 1 replaced, 24" high, 50" wide, 23" dia., original finish. Illustated.
- 331. Early 19th Century solid walnut cradle, heart cutouts, corner post construction, turned finials, 40" long. Illustrated on page 19 with item 452.
- 332. Very fine late 19th Century kerosene table lamp , flow blue floral designs with large butterflies, finely cast bronze base, electrified, 12' tall. Illus.
- 333. Very fine C. Late 1700's Chippendale slant lid desk, solid cherry, drawer & fitted interior, 4 graduated drawers, molded drawer edges, bracket feet, dovetailed case top and bottom, yellow pine secondary woods, great size, 36" wide, 40" tall. Illustrated inside front cover.
- 334. 18th Century Chippendale foldover card table, solid birch, drawer in skirt, square tapered legs, molded edge, swing leg, dovetailed, mortise & tenon construction, 34" wide, 26" tall. Illustrate above, left.



#318 Poppy Pattern



#327 & #480



#314 Blue/White Stoneware



#334 Period Chippendale Birch



#323 Cameos, Diamonds



#316 Brilliant Cut Glass

305 Delaware Valley & N.C., 330



#306 Oil on Board, 5x7"



#310 & 107



#332

335. Outstanding C. 1820 solid bird's eye maple and cherry chest, 2 over 4 drawers, pineapple acanthus leaf carved columns, hairy paw feet, 46" wide, 48" tall. Illustrated.
336. Very fine Sheraton Revival double pedestal banquet table. Solid mahogany, 54" wide, 4-18" leaves, reeded urn pedestals, heavy reeded saber legs, brass paw feet. Illustrated
337. Early 1800's period Hepplewhite 4 drawer chest, cherry and high grade mahogany, tall original bracket feet, brass pulls and escutcheons, excellent condition, 43" wide, 46" tall, 29" high writing surface. Illustrated.
338. Early 19th Century secretary desk, solid cherry, lift top slant lid with drawered and fitted interior, unusual open base with stretcher frame, turned legs, tiger maple paneled double upper doors, molded cornice, mortise tenon and pin construction, 6' 3" tall, 44" wide, 25" deep. Illustrated.
339. Excellent C 1810 Sheraton 2 drawer stand, flame and solid mahogany, classical half columns by drawers, turned and reeded legs, 22" wide, 16" deep. Illustrated.
340. Beautiful Rococo kettle on stand, silverplate, nice hallmarks, nicely done floral engraved decorations, melon and leaf finial, shell and scroll stand with original burner, 15" tall. Illustrated on back cover.
341. Very fine Federal revival oval 2 part dining table, mahogany, 30" wide x 11" long, with 20" leaf, oval/line flaming birch inlays on strip laminated skirt, double pedestals each having turned acanthus carvings, leaf carving and reeded saber legs, heavy brass paw feet. Illustrated.
342. 3 19th Century Indian prints, (A) Yaha Hajo, Seminole chief, by Rice and Clark, 1842, Phila.; (B) Tah-Chee, Cherokee chief, E. C. Bidel, 1837, Phila.; (C) Payta Kootha, "Shawnee" warrior, by Bidel, 1836, Phila. Illustrated.
343. Unusual C. 1790 Hepplewhite chest, high grade mahogany and cherry, rosewood line inlay upper section with 2 doors, 2 small drawers in center above 2 over 2 drawers, French bracket feet, period brasses, cornucopia motif, 44" wide, 41" tall. Illustrated.
344. Rare C. 1800 Hepplewhite period cellarette, fine fiddleback mahogany, square tapered leg with brass cup casters, lift top, with fitted interior for 6 bottles, 19" wide, 25" tall, 13" deep, provenance, J. Wannamaker, Phila. Illustrated.
345. Very fine C. 1820 Federal butlers desk, fitted tiger maple interior, flame mahogany, banded inlay drawer fronts over bowfront double doors, unusual tall 3 1/2" wide cellarette drawer, double reeded pilasters, gadroon and leaf carved skirt, carved paw feet, 7" tall galley back and sides, 44" wide, 49" tall. Illustrated.
346. Large flow blue pitcher and bowl set, Montrose pattern, B&K England, deep blue floral patterns, 15" diameter bowl. Illustrated.
347. 19th Century revival solid mahogany canopy bed, double spiral reeded and turned posts, 84" tall, flame mahogany, triple paneled headboard, large broken arch crest, flame finials, scrolled footboard, 60" overall width. Illustrated.
348. Exceptional C. 1810 Sheraton dressing table, finely carved acanthus leaf and rosette scrolled mirror arms, 4 half drawers, 3 drawers over single drawer, shelf in open base, finely turned & spiral reeded legs, brass cup and ball feet, 5' 9" tall, 42" wide. Illustrated.
349. Period Sheraton bow front chest, solid and flame mahogany, spiral and ring turned posts, turned cookie corner top, reeding on corner columns and legs, brass pulls, 41" wide, 39" tall. Illustrated.
350. C. 19th Century wooden bucket, great original green paint, tapered wooden bands, handle, 12" tall. Illustrated inside front cover.



#341 Figured Birch Inlay



#335 Birds eye Maple



#339 Reeded Legs



#336 Mahogany, 4 Leaves



#347



#337 C. 1800 Hepplewhite



#346



#342 1850's Indian Prints



#348 Acanthus Carving, Brass Feet



#338 Cherry, Tiger Maple

#344 Hepplewhite Cellarette



#345 Desk- Tiger Maple Interior



#343 Inlaid Hepplewhite



#349 Period Sheraton





#351 w/#13 Sheraton Canopy



#363 Bowfront Phila. Chest



#369



#360



#359



#357 Carved Cornucopia, Eagles



#361 Exceptional Carved Federal Sofa

351. Rare early 1800 canopy baby bed, solid birch, nicely turned legs and posts, bolt together rope rails, 11" high sides, 47" tall, 48" long, 28" wide. Illustration.

352. Excellent C. 1810 Sheraton 1 drawer stand, shelf in base, white pine, turned legs, unusual reeding around skirt and shelf, mortise tenon and pin construction, 20" square, 30" tall, SE PA. Illustrated on inside cover.

353. Very fine C. 1820 Federal sideboard, beautiful flame mahogany with rosewood banded panels, 4 spiral & turned columns with scroll and acanthus leaf capitals, spiral reeding on legs, 3 rosewood inlaid band drawers, over 4 paneled doors, 8" tall inlaid back with 4 matching columns, 70" wide, 52" tall, 24" deep. Illustrated.

354. Large Mid 19th Century Old Paris covered tureen, raised leaf and vine around large mellon finial and scroll handles, 12" tall, 15" long. Illustrated.

355. Rare C. 1820 carved Federal center table, solid mahogany, 44" diameter, beautifully carved fruit basket acanthus leaves on pedestal, platform base, carved acanthus leaf and paw feet. Illustrated on cover.

356. 2 Flow blue platters; A) floral pattern, Minton, England, 18" oval; B) Chinese panel and floral pattern, 14" oval. Illustrated page 19.

357. C. 1820 carved Federal sofa, in the manner of Duncan Phyfe, flame mahogany, like new purple upholstery, carved eagle, cornucopia feet, carved paw feet, scroll arm, ebonized gilt decoration, panels on scroll back and seat rail, 93" long, 34" tall. Illus.

358. Very unusual carved Federal corner table, finely carved acanthus leaf panel on skirt, corners, and paw feet, shelf in open base, turned and reeded legs with brass trim, carved gadrooned edge, 37" across front, 22" deep, 29" tall. Illustrated.

359. C. Mid 1800 canopy bed, solid maple, nicely turned and octagon posts, 7" 1" tall, arched headboard, low footboard, overall width 55". Illustrated.

360. C. 1820 New England 4 drawer chest, flaming birch, mahogany drawer fronts, acanthus carved and turned full columns, turned feet, 2 half drawers, scroll back splash, 51" tall, 43" wide. Illustrated.

361. Exceptional C. 1830 Federal sofa, flame mahogany, acanthus carving on scroll arms and unusual scrolled front and back feet, carved crosshatch panel on skirt, large scroll crest rail, 82" long, 33" tall. Illustrated.

362. Pr. covered flow blue tureens, Verona pattern, unusual shape, scenic panels with cattle. Illus.

363. Excellent C. 1820 bowfront Empire chest, full inset columns, in the manner of J. Barry, Phila., high grade solid, flame mahogany, carved capitals and paw feet, cut glass pulls, 47" wide, 46" tall fine form and condition. Illustrated.

364. C. 1810 Sheraton 3 drawer drop leaf stand, Boston, MA. solid and flame mahogany, nicely turned legs, brass cup casters, 20" wide, excellent original condition. Illustrated rear cover.

365. Exceptional C. 1830 large plantation desk, slant lift top writing board, 2 drawers on either side of kneehole, nicely turned legs with heavy brass cups, double doors over open work area between double paneled doors, all with fitted interiors, brass mullion, one of the finest plantation desks we have offered, 5' wide, 4' 10" tall, 33" deep, beautiful original restored finish. Illustrated rear cover.

366. Outstanding C. 1830 Empire over mantle mirror beveled diamond panel corners, raised cove and deeply molded frame, 41"x 28", the finest of Empire Period mirrors. >

367. Early 1800 queen size canopy bed, heavy maple octagon and turned 5" diameter posts, 84" tall beautiful flaming veneer triple Gothic panel and arch crest headboard, overall 62" wide, 75" long. Illustrated.

368. Excellent C. 1830 Empire open base washstand, solid and flame mahogany, dove-tailed galley back and sides, demilune front skirt, opening in top for basin, scroll front columns, drawer in base, turned legs, 22" wide, 38" tall. Illustrated.

369. C. 1830 Empire drop leaf table, solid and flame mahogany, OG skirt, square OG pedestal, platform base, good scrolled feet, single board construction, 40" wide, 25" deep, 16" drop leaves. Illustrated.

370. 2 hunting case pocket watches 14kt gold; A) William Ellery, Waltham, Ma. movement, serial # 2647554, signed on face A. W. Co., engraved with branches framing village scene complete with gold link chain, B). Elgin, serial #5561319 brilliant leafy & floral engravings. See cover.

371. Rare C. 1830 Empire breakfront, flame mahogany, 2 drawers over 3 paneled doors, bow front center, full classical columns on bottom and top, 3 doors on upper cabinet with 13 individual panels, this is a Empire period item, 7' 5" tall, 6' 2" wide, 25" deep. Illustrated on front cover.

372. 9' X 12' Antique Persian Sarouk, all over floral pattern with intricate border, made of very fine kurk wool, hard to find, in excellent condition, very durable, dense known as rock rul.

373. C. 1830 Empire serving table (ham / mint julip), flame mahogany, white marble top, scrolled apron over narrow cabinet door with arched and carved decoration, scrolled feet, 35" wide, 38" tall, 16" deep. Illus.



#353 Inlaid Rosewood Panels



#373 Rare Empire Mixing Table



#358 Acanthus, Brass



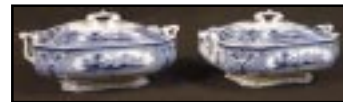
#367 Queen



#366 & #19 Fine Period Mirrors



#368



#362



#354 Old Paris

- 374. C. Mid 1800 3 pc. girandole matle set, possibly Boston, white marble base, excellent original untouched gilt finish and castings, " Spirit of '76" - Revolutionary War Veteran in knee breeches & tricorne hat accompanying a child wearing a cockade by tree, prism ring, original floral cut prisms, 17" tall. Illustrated.
- 375. Excellent C. 1840 secretary/desk, high grade solid and flame mahogany, large fold out writing surface, fitted interior, double door top with oval reticulated scroll carving over original glass, OG cornice with unusual leaf carved crest, OG scroll columns and feet, double doors in base, 7' 9" tall, 42" wide, 29" tall writing surface. Illus. Back
- 376. C. Mid 1800 solid rosewood parlor chair, unusual open back, reticulated leafy & rose carving, cabriole legs, rose carved skirt, beautiful example of Rococo period, 40" tall. Illustrated.
- 377. Rare Mid 1800 Rococo writing stand/dressing table, high grade mahogany, inlaid satinwood panels throughout, swell front and side skirts, highly carved with fruit, roses, and scrolled leaves on tall reticulated crest, shelf supports, triple C scrolled legs and stretcher, with unusual upholstered center, drop front work surface and sliding top, revealing fitted inlaid satinwood interior, 3 half drawers, shelf on back, mother of pearl and ebony knobs, 5' tall, 36" wide, 24" tall, finished on all 4 sides, a very fine well made item. Illustrated on back cover.
- 378. Pr. Victorian pink overlay lustres, 14" tall, enameled floral decoration, 7" cut tear drop prisms. Illustrated.
- 379. Rare Rococo period accordion extension banquet table, paten 1849 T. P. Sherburne, Phila., 48" diameter opens to 9' long, solid walnut, flame skirt, unusual enclining scroll double pedestals, 1 leaf, an excellent example of 19th Century innovations. Illustrated.
- 380. Set 4 unusual mid 19th Century dining chairs, carved leaf crest, upholstered oval panels in back with open scroll, shaped seat, leaf carved cabriole legs, 36" tall. Illus.
- 381. Very fine C. Mid 19th Century Rococo dressing table, beautiful flame mahogany, double white marble tops on triple serpentine front half drawers, serpentine front base, with unusual knee hole center, 3 drawers over doors, finely fitted drawers behind doors, nicely carved cabriole feet, canted turret corners and shaped panels throughout, shaped and carved crest, mirror, and mirror arms, mahogany secondary woods, 6' 9" tall, 48" wide. Illustrated.
- 382. Exceptional heavy brilliant, period flower center, 10" dia., very unusual shape, narrow flaring, with stepcut neck, fine hobstar and fan cut pattern with bulls eye outer edge, deep miter cuts on bottom. Illustrated on cover.
- 383. C. Mid 1800 Rococo rosewood bed, 7' 2" tall, signed Mitchel & Rammelsburg, Cin. OH., double paneled headboard, carved medallion, leafy carved crest, octagon head/foot posts, arched footboard, 58" wide. Illustrated.
- 384. C. Mid 1800's rosewood white marble top dresser, nicely molded broken arch crest, with carved dolphins and reticulated carving around mirror, curio shelves, 4 drawer bowed center base, carving on drawer centers and canted corners, heavy vine and leaf carved handles, excellent original finish and condition, 52" wide. Illustrated.
- 385. Beautifully cut brilliant period 10" deep bowl, seven - 24 pt. hobstars with cane cross hatching and fan patterns. Illustrated.
- 386. 9' x 12' Antique Farahan rug, very finely woven, herati design all over with very fine lambs wool, very durable and dense. Illustrated.
- 387. Exceptional 1870 Renaissance sideboard/server, 6' 7" long, Phila., rare orange/salmon marble top, high grade figured walnut throughout, beautiful fruit and leaf carved pilasters, grape cluster panels on apron with 4 paneled drawers, oval sunken panels on double front and bowed end doors, 6' 7" long, 42" tall, 26" deep. Illustrated.
- 388. C. Mid 1800's Rococo rosewood, oval center table, white marble top, floral and leaf carving on skirt and knees of cabriole legs, open cut out stretcher, nicely turned and leaf carved finial, 45" long, 31" wide. Illustrated.
- 389. Very fine C. 1870 large Renaissance sofa / bench, possibly A. Roux, solid walnut, 7' 2" long, 4' 9" tall, beautiful reticulated vine and leaf carved crest, shell carved center medallion, open arms with very well carved lions heads, spiral turned back columns and stretcher base, 8 block and turned legs with carved florals, an exceptional 19th Century example. Illustrated on cover, with carving detail.

#383 Rosewood, Mitchell & Rammelsburg, Ohio



#387 Outstanding Figured Walnut



#379 "1849 Phila." Accordion 9'



#388 Rosewood, 45" L



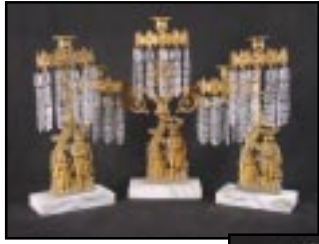
#380 Unusual Victorian



#384 Rosewood, 8 1/2' Tall



#381 Exceptional Dressing Table



#374 "Spirit of '76"



#378



#376 Rosewood



#386 9x12 Antique Farahan



#385 Beautifully Cut Hobstars



#391 Figured Walnut 2 pc. Suite

- 390. Rare Mid 19th Century solid rosewood canterbury, molded cut out ends, molded cut out sides and four divided compartments, 18" x 16" x 20" long. Illustrated.
- 391. Very fine Renaissance 2 pc. bedroom suite, solid walnut, queen size bed, 6' 6" tall headboard, unusual heavy shell and open scroll carved crests, beautifully figured walnut panels, carved and paneled rails, inset white marble top 4 drawer dresser, carved pulls, maple interior, 7' 9" tall, 50" wide. Illustrated.
- 392. C. 1870 Renaissance patent folding chair, original label "Holmes 1871", solid burl walnut panels, gilt trim, carved lion heads on arms, bell flower shells, carved gentleman with feather in hat on medallion crest, strap arms, an exceptional example of 19th patent furniture, 44" tall. Illustrated.
- 393. Unusual Renaissance C. 1870 linen press or small breakfront, solid walnut, burl walnut sunken and raised panels, medallion and leafy carved 3 drawer base, marble top, ring and shell carved pulls, 8' 11" tall, 49" wide, very rarely seen form. Illustrated.
- 394. Very fine 10" brilliant period cut glass bowl, heavy sterling rim, nice hallmarks, 24 pt. center hobstar, cane fans and many other hobstars pattern. Illustrated.
- 395. Very fine rosewood C.1870 parlor cabinet, possibly by A. Roux, N. Y., beautifully inlaid floral basket with ribbons in ebony, burls, satin, etc. on center door, side doors have bronze medallions of lady's in flowing gowns, incised carving bronze mounts, ebonized trim, 66" wide, 54" tall. Illustrated.
- 396. C. 1870 inlaid parlor table, possibly Grand Rapids, solid walnut, beautiful figured walnut top, with inlaid oval of florals, ribbons in many various woods, original ebonized and incised gilt carving on skirt legs and stretcher, bronze ladies head on knees of 4 scrolled cabriole legs, 38" long, 25" deep, 30" tall. Illustrated.

#396 Figured Walnut Inlays



#396 Original Gilt / Ebony

- 397. C. 1830 Aesthetic movement dresser in the Japanese taste, attributed to Herter Bros., N. Y., white inset marble, swinging mirror on arms, half drawers with spindles in galley back, 4 drawers in base, beveled panels, incised carvings with 4 plaques of hand painted Japanese figures on crest and drawers, bands of ebonized Greek key decoration, cherry secondary woods, pulls similar to desk in Herter Bros. exhibit catalog on cover and page 196, 6' tall, 50" wide. Illustrated.



#395 Inlaid Rosewood, Bronze



#398 Rosewood, Bronze

- 398. C. 1870 solid rosewood parlor chair, possibly Hunzinger, original gilt, incised leafy and shell carving, bronze medallion on crest, turned legs, 33" tall. Illus.
- 399. 1870 Renaissance Victorian sofa, solid and burl walnut panels, open scrolled carvings on unusually high crest, burl and carved arms and serpentine front rail, turned legs, 49" tall, 72" long, nice large scale and proportion.
- 400. 9' 2" x 11' 6" Old Persian lillihan all over stylized floral motif, beautiful vivid colors with unusual ivory background, in excellent condition. Illustrated.



#394 Sterling Rim



#390 Rosewood



#399 Burl, 49" Tall



#393 Rare Press, 8'11" Tall
#400 -9x12 Old Persian Lillihan



#392 1871 Patent



#397 Herter Painted Panels

- 401. C. 1870 Renaissance Revival triple door breakfront, solid walnut, 3 glass arched upper doors, 3 drawers over 3 paneled lower doors, nicely molded panels throughout, heavy cornice moldings, 8' 6" tall, 72" wide, 22" deep. Illus.
- 402. C. 1870 Aesthetic movement inlaid bird's eye maple frame, inlaid ebony florals on corners, 2 tone gilt liner, early Paris , coaching print, plate #1 " Changing Horses" 1842, original glass, 36" wide, 27" tall.
- 403. Exceptional aesthetic movement davenport writing desk, solid & burl walnut panels, lift slant lid, bold turned spindle, galley back, incise carved front supports, 4 drawers on right side, pull out swing pen drawer, door on left side, paneled, carved & finished on all 4 sides, 30" wide, 38" tall, 23" deep
- 404. 7 Pc. carnival glass water set, blue, crane and bull rushes, paneled background, 8" tall. Illustrated.
- 405. Hard to find Federal revival double door china cabinet, solid mahogany, acanthus leaf and drape carved columns and paw feet, glass doors, sides, and mirror back, 65" tall, 44" wide. Illustrated.
- 406. 18" Heavy brilliant cut glass oval ice cream tray, excellent deep cutting, hobstars, snowflake, and diamond patterns. Illustrated.
- 407. C. 1830 carved Federal Jackson press, flame mahogany, beautifully carved pineapple, acanthus leaf and basket half columns, hairy paw feet, carved gadrooned border, rosewood banded inlaid panels and drawers, 3 drawers over single drawer, over double paneled doors, 45" wide, 50" tall. Illustrated.
- 408. Very fine brilliant cut glass bowl, heavy, 9" diameter with flaring sides, deeply cut bell flower and thistle pattern in manner of Tuthill. Illustrated.
- 409. Rare C. Early 19th Century Federal server stand (ham/mint julep), solid and flame mahogany, drawer over door, OG skirt, unusual acanthus carved apron, knees, and paw feet, 34" wide, 38" tall, 17" deep. Illustrated.
- 410. Heavy sterling beaker/tumbler, reeded rim and base, Claud S. Bennett, # 3759. Illustrated.
- 411. 19th Century 54" round Federal revival banquet table, solid mahogany, four 15" leaves, turned and acanthus leaf carving on pedestal, legs, paw feet. Illustrated.
- 412. 2 Victorian peg lamps; A). Ruby cut to clear, thumbprint pattern, B). Ruby art glass, opalescent ribs. Illustrated.
- 413. C. Early 1800 Sheraton dropleaf table, high grade mahogany, paneled skirt with drawer in both ends, 4 turned columns on platform base, sabre legs, solid brass paw feet, 48" long, 23" wide. Illustrated back cover.
- 414. Victorian 32" tall banquet lamp, onyx column pedestal, fancy silvered base, capitol & open work tank with ladies heads & medallions, brass lift out tank, handpainted pansy decorated ball shade, electrified. Illustrated.



#401 Walnut, 8 1/2' Tall



#412, #114 Early Peg Lamps, Ivory Candlesticks



#406 Carved Jackson Press



#414 & #74



#406



#404 Northwood



#410 Silver



#408



#411 Mahogany, 4 Leaves



#405



#409 Carved "Ham" Table



#415



#419



#416

415. C. 1830 Empire slant lid desk, cherry and flame mahogany, nicely banded fold down writing surface, fitted interior, 3 drawers, scrolled half columns and feet, dovetailed construction, 42" tall, 41" wide, 29" high writing surface. Illustrated.
416. 1830 Empire 2 drawer drop leaf work table, possibly Meeks, NY, flame mahogany, lift up writing desk in top drawer, rounded front drawers, square vase shaped pedestal, unusual round platform base, deep C scroll feet, 29" tall, 19" wide, restored original finish. Illus.
417. Excellent C. 1840 secretary/desk, high grade solid and flame mahogany, large fold out writing surface with storage and fitted interior, double door top with oval reticulated scroll carving over original glass, OG molded cornice with unusual leaf carved crest, OG scroll columns and feet, double doors in base, 7' 9" tall, 42" wide, 29" tall writing surface.
418. 11' 3" x 15' 7" Antique Ovshak, very rare, ivory background, typical bold geometric all over pattern, palace size, very decorative.



#426



#423



#427

419. C. 1840, Baltimore open base secretary, solid and flame mahogany, unusual Gothic arched fret work over double glass upper doors, OG cornice, ripple molding around 3 skirt drawers, foldup desk and ink well in center drawer, heavy octagon and turned legs, 7' 4" tall, 46" wide. Illustrated.
420. Unusual c. early 19th century round stagecoach trunk, leather trim, wrought iron clasps & lock, 36" long, 20" diameter
421. Mid 1800 Empire 4 drawer dresser, flame mahogany, serpentine top drawer, white marble, half drawers, wish bone mirror arms, rose & scroll carved crest, bracket feet, 7' tall, 43" wide.
422. Unusual antique Trible Kazak rug, rose colored field, dark blue and tan patterns, 5' x 6' 6".
423. Pr. c. 19th century solid brass french candlesticks, nice engraved floral designs on bobeches, knights on horses relief design on unusual deep bowl bases, baluster stems, 8" tall. Illustrated here with table, and on page 15 with peg lamps.
424. 19th century Queen Anne revival dining table, solid mahogany, heavy cabriole Queen Anne legs, 58" long, 42" wide, with 15" leaf, mechanism to crank open.
425. Beautiful Victorian silverplate 5 pc. tea set, two 11" tall teapots, sugar, & creamer, 28" footed silver on copper tray, hand chased repousse floral decoration, pedestal bases with open morning glory and vine motif on feet and finials, shell and scroll handles and spouts. Illus.
426. C. 1850 Rococo pole fire screen, solid walnut, carved adjustable frame with petti point lady with doves, carved turned pedestal, scroll and carved legs, 60" tall. Illustrated.
427. Large mid-19th plantation desk, slant top writing board, 3 skirt drawers, nicely octagon and turned legs, double doors over open work area between double paneled doors all with fitted interiors, 5' wide
428. Beautiful 19th Century tea box, high figured ash, inlaid ebony satinwood, and shield escutcheon, unusual laminated satin and ebony "jewels", 6" wide, 5" tall. Illustrated.
429. 2 Handmade antique rugs, Balouch pattern, natural blue and tan colors; A) 3' 10" x 7' 2"; B) brown and blue colors, 3' 10" x 6' 9".
430. 19th Century Victorian chinoiserie lift top work table, 2 tone gilt scenic hand work panels on ebonized background, lift top reveals fitted interior with decorated lids, carved ivory floral knobs, pull out bag drawer, lyre ends, stretcher base, carved gilt shell and scroll feet, 26" wide, 17" deep, 29" tall. Illustrated.



#430



#425



#428, #308 19th Century Tea Boxes



- 431. Excellent C. 1850 Rococo parlor chair, solid rosewood, shell and scroll crest, back, and serpentine seat rail, cabriole legs, 39" tall. Illustrated.
- 432. Pr. 16" tall Old Paris Rococo porcelain mantel vases, open leaf floral & bud decoration, each having free standing statues one of lady playing with cat, one of boy with puppy balancing ball, has old repairs. Illus.
- 433. Mid 1800 Rococo serpentine front dresser, white marble top, carved roses and scrolls on turned and fluted columns on canted and turret corners, mirror arms, and escutcheons.
- 434. Very fine Kashan oriental rug, cobalt blue field, overall light blue and beige pattern, vases, florals, etc., 9' 10" x 13", Illustrated.
- 435. Renaissance Victorian 2 part secretary/desk solid and burl walnut panels, fruit carving on bevel paneled doors on base, unusual cylinder roll top desk with pull out writing surface, fitted maple interior, original glass in double door bookcase top, 7' 9" tall, 48" wide. Illustrated.
- 436. Late 19th Century solid brass candelabra wall mirror, 3 arm with double branch gas lights, fancy reticulated scrolled leafy design frame, ladies head crest, original beveled mirror, 30" tall, 15" wide, 10" deep, electrified.
- 437. C. 1870 small Renaissance sideboard, solid walnut, white marble top, carved deer head on scrolled crest, shelf and fruit carved clusters on panels and drawer pulls, 55" wide, 6' 8" tall. Illustrated.
- 438. Nice Renaissance C. 1870 workstand, solid and burl walnut panels, lift top with maple interior, mirror back, round bag drawer, carved and molded legs, stretcher base, 3 large finials, incised carving, 21" wide, 29" tall.
- 439. Rare C. 1870 Renaissance cylinder roll desk, exceptional burl and solid walnut, satin and rosewood trim interior, large pull out writing surface, carved escutcheon pulls on skirt drawers, open base with tall turned legs, molding and panels on all 4 sides, dovetailed galley back, 48" wide, 28" deep, 52" tall. Illus.
- 440. Unusual C. late 1800's twig carved card stand, paw feet, two carved wooden dishes to receive cards, 32" tall. Illustrated.
- 441. Late 1800's unusual small size slant front secretary/desk, single glass over slant lid writing surface, fitted interior drawer over 30" wide, double door base, reticulated carved crest, 6' 11" tall. Illustrated.
- 442. C. 19th Century kerosene table lamp, satin half shade and matching base, daisy decorations, fancy cast iron base, 17" tall, possibly Wavecrest, electrified.
- 443. Renaissance Victorian double door bookcase, solid walnut, nice moldings, single drawer in base, original wavy glass, 7" tall, 48" wide. Illustrated.



#439, #458 Burl Cylinder Desk



#443



#432 Old Paris



#437 Hunting Sideboard, Carved Deer



#440



#435 Cylinder Roll, 7'9" Tall



#431 Rosewood



#441



#442





#444, #55 Rare Pendant Wall Clocks



#445 3pc Rosewood Suite



#457



#456, #307 Tiger Maple



#455 15" Burl Bowl

444. Unusual brass Victorian wall clock, 20" tall, 7" diameter face, porcelain repousse, numerals, cast fittings, lions heads, bird in nest crest. Illustrated.
445. 3 Pc. Rococo parlor suite, solid rosewood, scroll carved crest, serpentine skirt, carved cabriole legs, 2 matching arm chairs, sofa, 62" wide, 36" tall. Illustrated.
446. Excellent rococo pole fire screen, oval adjustable screen, rose, thistle & leaf carved crest, finely done needle & pettipoint of royal officer with bride, surrounded with floral & leaf carved scrolled sabre feet, deep spiral pedestal, brass pole. Illustrated.
447. Renaissance period turtle top parlor table, white marble, solid walnut, molded serpentine skirt and cabriole legs, finial and stretcher base, 40" long.
448. 14 pc Old Paris dessert set, large covered sugar, creamer, waste bowl, eight 8" plates, good gold decorated raised leaf pattern, open handles. See item 47.
449. C. 1850 Rococo rosewood corner curio, possibly Meeks, white marble top, ripple molding, bottom cabinet has leafy reticulated carving over oval mirror, double shelf, mirrored back curio, 30" across front, 5' 2" tall. Illustrated.
450. Unusual Mid 1800 3 arm girandole, signed Archer & Warner, Phila., grape cluster, vine and leaf motif on arms and prism rings, 2 children gathering grapes under arbor, old brass finish. Illustrated on page 9.
451. Renaissance 3 drawer chest, beautiful flame drawer fronts, ripple moldings, carved escutcheons, canted molded corner columns, 41" wide, 38" tall.
452. Old Turkish rug, rust colored field, earhttone colors, geometric patterns. Illustrated right with baby bed.
453. C. 1880's Aesthetic movement parlor cabinet, relief carved floral panels on door, pilasters, and columns, hand painted gilt and glass panel of wedding party, signed L. Simon_ _t, leaded glass in cabinet door, with shelves and columns on either side, open base, beveled mirror back, 52" tall, 50" wide. Illustrated.
454. Solid burl walnut tantilus, lift top, fitted interior for bottles, brass handles, 14" wide, 12" tall.
455. Early 15" diameter burl bowl, nice figured grain. Illus.
456. C. 1800 2 drawer workstand, softwood with finely figured solid tiger maple drawer fronts, nicely turned legs ending in ball feet, 19" square, 28" tall. Illustrated.
457. Early 19th Century Empire period half commode, solid and flame walnut, drawer over door, 16" square, good thin top.
458. Old Persian Baktiorig rug, overall paneled field, florals and geometric patterns, 5' 4" x 10' 6", Illustrated page3.
459. Period Sheraton 4 drawer chest solid cherry, turned half columns and feet, 45" wide, 47" tall.
460. C. 1810 Sheraton tilt-top candlestand, mahogany, 17" wide clover shaped top, reeded edge, vase shaped turned pedestal, reeded sabre legs, unusual turned button feet. Illustrated.
461. Victorian solid oak wall barometer, floral and leaf carvings, 34" tall.
462. 2 Drawer stand, softwood, unusually deep drawers, cut out apron, 22" wide, 29" tall.
463. 19th Century solid walnut candlestand, Randolph County, NC area, 18" dia. tapered turned pedestal square cabriole legs, repairs to base of pedestal. Illustrated.
464. Solid oak Sessions calendar wall clock, double eglomise panel advertising Calumet baking powder, 34" tall, 15" wide. Illustrated.



#453 Ebonized, Painted Panel



#449 Rosewood



#446

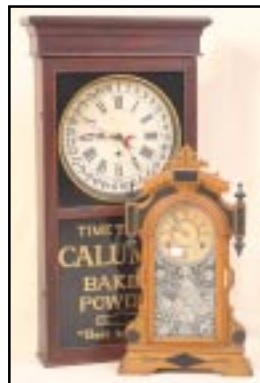
#463 North Carolina



#464, #150 Calendar Clock, 34"



#460



465. Tiger oak sideboard, hutch top with curved beveled leaded glass doors, carved door on base with leaded glass center door, carved feet, 46" wide, 66" tall. Illustrated this page.
466. C. 1890 solid oak youth rocker, stick and ball spindle back, carved crest, bentwood arms, cane seat, nice original condition.
467. Solid oak double door book case, carved crest, 66" tall, 36" wide. Illustrated.
468. Renaissance French 51" diameter banquet, solid oak shell carved border, leafy carved pedestal & legs, different fruit carved on foot of each leg
469. Solid oak double door wardrobe, beveled panels, carved crest, 80" tall, 48" wide.
470. 2 Rolling pins, 20" long; A) white porcelain with blue chery basket and heart decorations; B) white opalescent glass. Illustrated.
471. 1830 Empire flame mahogany chest, 2 over 4 drawers, round and scroll half columns, scroll feet, 6" splash back with columns, period sandwich glass pulls, strawberry diamond pattern, 44" wide, 47" tall.
472. Small country footstool, dovetailed top and stretcher.
473. Early 1800 mahogany 4 drawer chest, full turned tiger maple columns, early blown glass knobs, 44" wide, 45" tall.
474. C. 1830 Empire dropleaf 1 drawer stand, SC area, cherry, turned and square legs.
475. 2 blue and white platters; A) 18" blue transfer grape cluster and vine border, large Exhibition hall scene in center; B) 14" flow blue, Paris potter, Johnson Brother. Illustrated below, with others.
476. Handmade oriental rug, Josegon pattern, red and navy color, 6' 2" x 8' 11".
477. C. 1830 period Empire wash stand, beautiful flame and solid mahogany, drawer over double Gothic arched paneled doors, cut out bracket feet, nicely turned towel bars, splash back, 39" wide, 34" tall.
478. 1830 Empire drop leaf stand, flame mahogany, round drawer fronts, square pedestal, platform base, bun feet, 17" wide.
479. C. 1830 Empire fold over card table, flame mahogany, wavy skirt, wishbone pedestal, scroll feet, 36" wide. Illustrated.
480. Hanging stoneware round blue & white salt crock, basket weave, grape cluster decorations, 6" tall
481. C. 1820 carved Federal sideboard, solid and flame mahogany, beautifully carved pineapple fruit and acanthus leaf columns and feet, 2 drawers over doors with 2 cellarette center drawers, 12" tall back splash with reeded sunburst, open brass galley, pull out work slide on side, 56" wide.
482. C. Early 20th Century gilt bull's eye mirror, ribbon and ball borders, eagle and holly leaf and berry crest, 31" tall.
483. Mid 1800's Empire 4 drawer chest, flaming walnut, OG top drawer, carved moldings and scroll feet, 42" wide, 48" tall.
484. Victorian pull down kerosene lamp, hand painted robin and flowers on half shade and matching font, embossed brass frame, electrified.
485. Pr. marble urns on pedestals, ruffled rims, stylized leaf carving on urn, pedestal & base, 28" tall, 10" diameter.
487. Heavy black marble pedestal, 20" diameter, 32" tall
488. Set twelve 9" bird decorated porcelain plates; ducks, pheasants and goose.
489. 6 wrought iron ice cream chairs. Patent date 1901, Chicago.
490. Hand made oriental runner, Sorouk pattern, 3' x 10' 9", deep maroon and navy colors.
491. Nice Renaissance Revival solid oak wall barometer, nice carvings and finials, Heinrich, Unkel, 22" tall.
492. 3 Brilliant cut glass bowls, some damage; A) low 9" bowl, signed Maple City, hobstar & cross hatching, B) 8" cut glass bowl, hobstar & fan pattern; C) 8" cut glass bowl, hobstar and cane pattern.
493. Renaissance solid walnut washstand, 1 drawer over double doors, burl panels, carved pulls, 29" wide, 35" tall. Illustrated.
494. Swivel organ stool, needlepoint seat, cabriole legs.
495. Renaissance Victorian drop center dresser, solid walnut, white marble top, tear drop pulls, 6' 8" tall, 43" wide.
496. Small Renaissance 3 drawer chest, white marble top with unusual scalloped splash back, flaming walnut, molded drawer fronts, carved escutcheons, canted corners, 30" wide, 37" tall.
497. c. 1890 eastlake love seat, solid walnut, leaf, floral & incised carvings, turned legs, recent burgandy & beige upholstery, 4' 5" long, 40" tall.
498. Hand made oriental rug, Aubusson pattern, deep red field, sculptured floral border, 6' x 8' 9".
499. Carved marble 2 tier fountain, leaf carving, 4' 9" tall.
500. Small Gone With the Wind lamp, 15" tall, red floral and leaf paintings on ball and half shade.



#479 Empire Card Tables



#465, #467 Selection of Oak



#475, #356 Flow Blue



#470



#106, #313, #319



#452, #331



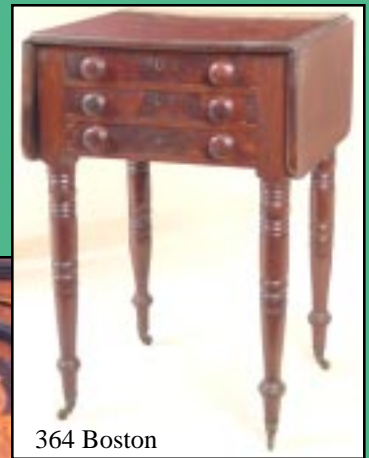
#493 Burl Walnut



377 Mahogany, inlaid satinwood



321 Old Paris



364 Boston



413 Exceptional Sheraton



395



340 Rococo Kettle



365 Large Plantation Desk, Brass Trim



375 Rococo Secretary

Flomaton Antique Auction, Inc.

P.O. Box 1017

Flomaton, AL 36441

Please Deliver Immediately To:

PRESORTED
1st CLASS MAIL
US POSTAGE
PAID
FLOMATON, AL
PERMIT #28